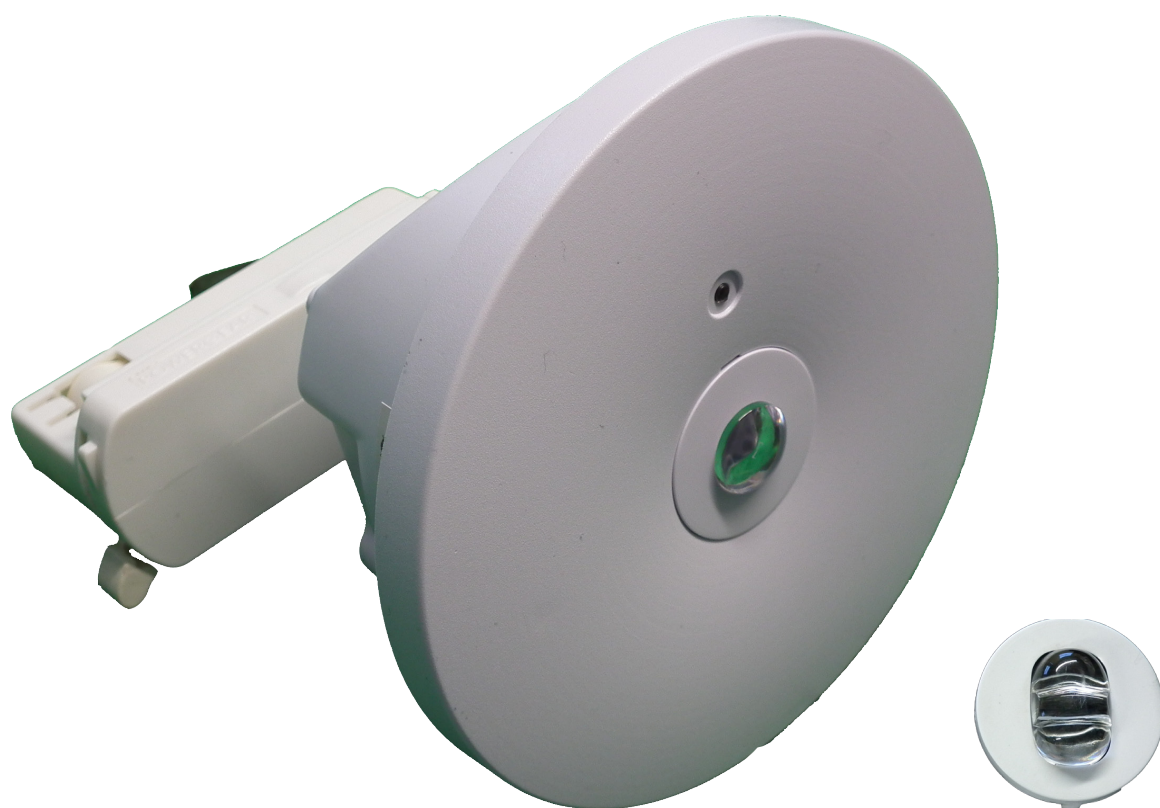


CHANNEL

LIGHTING & SAFETY SYSTEMS

Azelio Track



Emergency Downlight
from Channel Safety Systems



Emergency
Lighting



Emergency Downlight

Azelio Track emergency downlight is a compact, 3w high specification track mounted emergency LED downlight supplied with both open area and escape route lenses, our new Azelio Track mounted emergency downlight offers a high performance, cost-effective emergency lighting downlight for use where track lighting is installed.

The Azelio Track comes with two lens options, open area & corridor. It is supplied with a Global Track adapter.

Available in white and black.

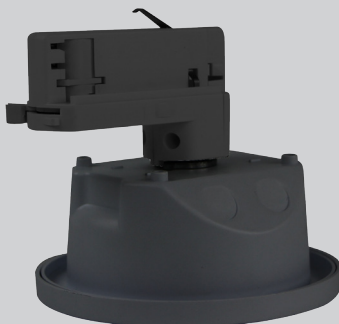
High specification optic design and performance allows increased spacing providing reducing costs.

Supplied with integral driver and NiCd battery pack

Track adapter can be easily swapped to match almost any track profile.

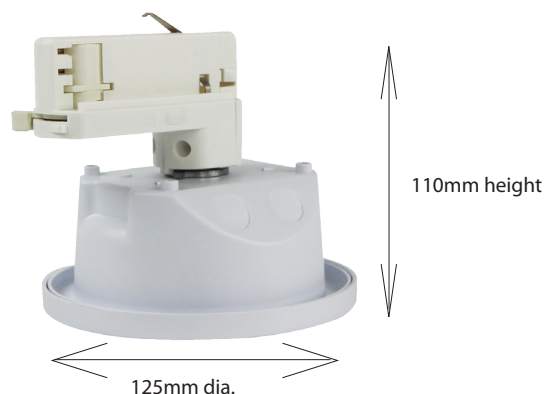
Features

- Track mounted 3 hour emergency light
- Versatile multi-functional use (escape and open area anti-panic)
- Supplied with both open area & corridor lenses
- Quick & simple to install
- Suitable for Global track mounting
- Non-maintained
- Minimal maintenance
- Easy installation
- IP20 ingress protection
- RoHS compliant
- Excellent luminaire spacings
- White & black options



SPECIFICATIONS

Light Source	SMT LED 3W
IP Rating	IP20
Emergency Duration	3 hours (minimum)
Mains Voltage	230V 50Hz ± 10%
Mains Current	(max) 150mA (max) 40mA quiescent (3W)
Recharge Period	Less than 24 hour
Charge Indicator Integral green LED	Integral green LED & red fault LED
Changeover Voltage	As per the requirements of BS EN 60598-2-22
Temperature Range	5°C to 40°C
Weight	672gm
Battery	3.6V 3000mAh Nickel Cadmium
Material & Finish	Polycarbonate construction, white finish
Cut out	
Lumen Output	Lumen Output - Corridor 134Lm - Open Area 89Lm



PRODUCT CODE	DESCRIPTION
E/AZ/TRACK/COA	Azelio track downlight with corridor & open area lenses - White
E/AZ/TRACK/COA/BK	Azelio track downlight with corridor & open area lenses - Black



www.channelsafety.co.uk

Tel: 0845 884 7000

Email: sales@channelsafety.co.uk

Errors & omissions excluded. Specification is subject to change without notice.

revision 017-1