

# STRATOS Round Hi

High output (475lm) Emergency Light

E/STRATOS/RD/Hi 3 hours LiFePo4 6.4v 3.0AH Battery Self-Test

Ideal for high risk task lighting or high level applications, the STRATOS-RD-Hi offers a stylish solution to meet the higher lighting level required in BS5266 2016

The STRATOS-Hi also benefits from its built 'self-test' function, which ensures the fitting is tested to meet the required standards.

The STRATOS-RD-Hi offers a cost effective solution for difficult emergency lighting areas.



Dimensions [mm]



Accessories

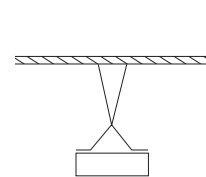
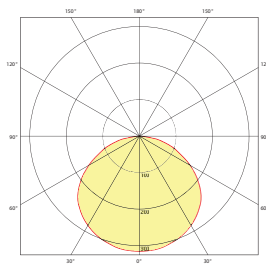
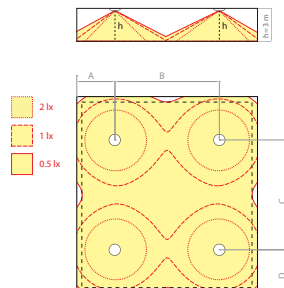


Technical parameters		Certificates
light source	2 led / 5w	
Battery operating time	1h / 3h	
mode	M/ NM	
Luminous flux	223lm / 475 lm	
Testing	Self test	
Power supply	210 ÷ 250 V Ac 50 ÷ 60hz;	
Protection degree	IP65	
Insulation class	ii	<p>Pn-en 60598-1 Pn-en 60598-2-2 Pn-en 60598-2-22 Pn-en 61347-1 Pn-en 61347-2-7 Pn-en 61347-2-13 Pn-en 55015 Pn-en 61000-3-2 Pn-en 62031 Pn-en 62471 Pn-en 1838</p>
temperature range	0 °C ÷ +40 °C	

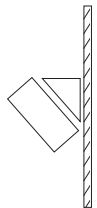
colour ☐ RAL 9003

Photometry

[m]	A	B	C	D
2,5	4.6	11.2	11.2	4.6
3,0	5.1	12.5	12.5	5.1
4,0	5.7	13.9	13.9	5.7
5,0	5.9	15.4	15.4	5.9
6,0	6.6	16.2	16.2	6.6
7,0	6.7	17.4	17.4	6.7
8,0	6.5	18.2	18.2	6.5
9,0	6.4	19.5	19.5	6.4
10,0	6.4	19.9	19.9	6.4



bracket for suspended mounting



mounting option with 30° bracket applied

